

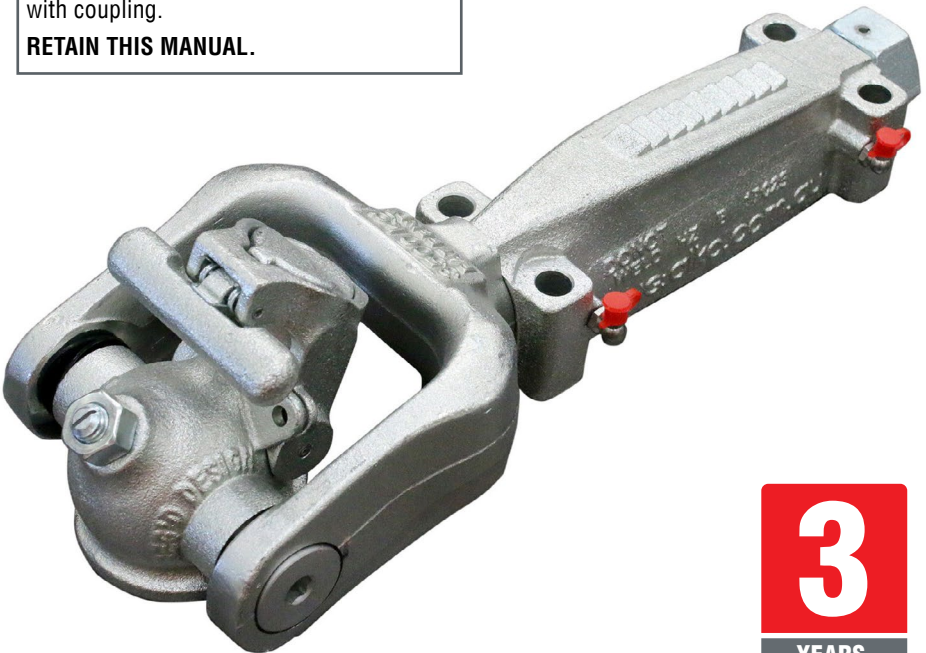
AL-KO OFF-ROAD BALL COUPLING USER MANUAL

Save This Manual. Keep this manual for the assembly, operation, maintenance and cleaning procedures. Keep this manual and the receipt or proof of purchase in a safe place for future reference.

WARNING

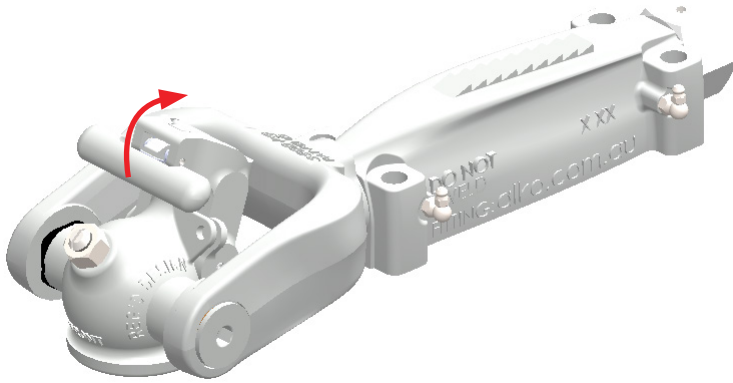
Read this manual before using this product.
Use only 50mm Australian Standard towball
with coupling.

RETAIN THIS MANUAL.

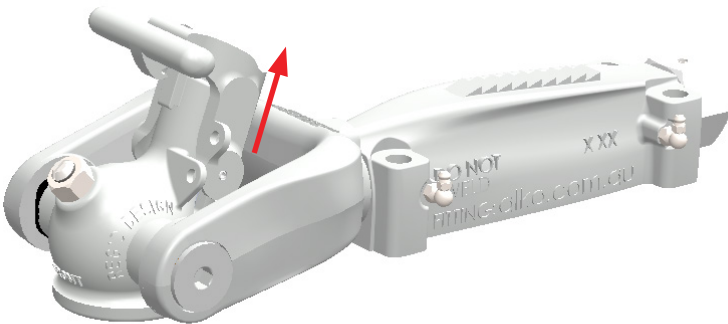


To Attach Coupling To Towball: 619350 (Fixed) & 619200 (Override)

1. Rotate latch handle upward.

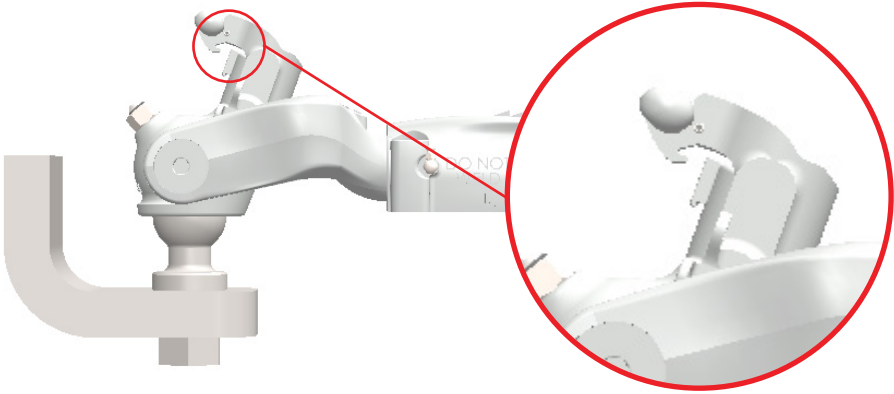


2. At the same time pull latch assembly up to lift tongue.



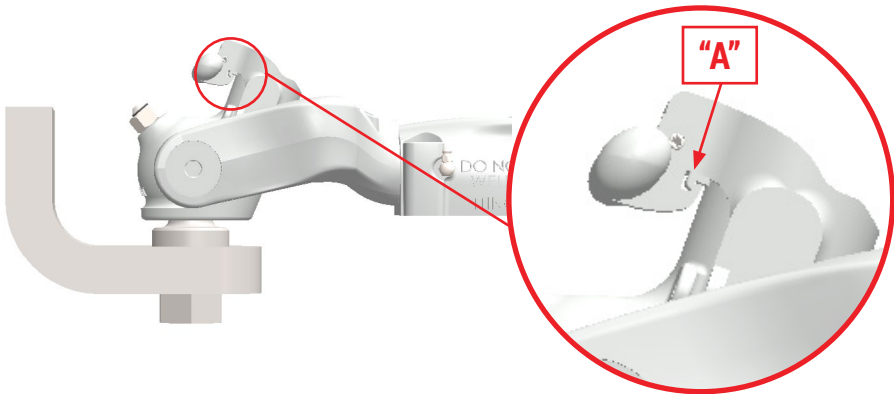
3. With latch assembly pulled back, lower the coupling onto tow ball

- | Ensure that a 50mm towball is fitted to tow vehicle.
- | No other size towball is safe to use with the coupling.



4. Release latch assembly.

5. Check that the latch has released and is engaged in the coupling head indicated as “A” below



6. Ensure that the ball is fully latched by attempting to lift the coupling vertically off the ball.

7. Connect all cable connectors and safety chains.

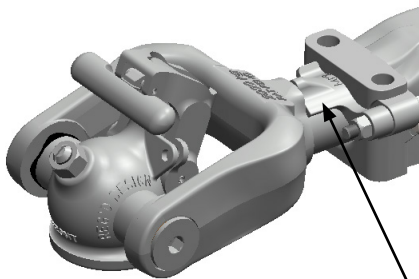
To Detach Coupling From Towball: 619350 (Fixed) & 619200 (Override)

1. Disconnect all cable connectors and safety chains.
2. Use the jockey wheel to take the weight off the ball until head of the coupling is able to rotate.
3. Rotate latch handle upwards. As per step 1 in the attaching section
4. At the same time pull latch assembly upward to release towball. As per step 2 in the attaching section
5. Raise the coupling from the towball.
6. Release latch assembly.

Override Latch Positions Off Road coupling 619200 ONLY:

Reverse Position

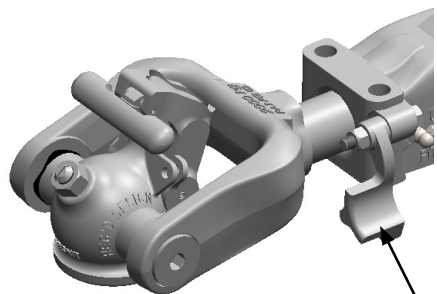
1. Before reversing the trailer, lip the reverse latch onto the shaft to prevent the override function from applying the trailer brakes.



Reverse Position

Forward Driving Position

2. After reversing, flip the reverse latch off the shaft to allow full override brake function.



Forward Driving Position

Fitting Instructions:

619350 (Fixed) & 619200 (Override)

1. Use four M12 or ½ inch Class 8.8 Bolts to attach the coupling to the drawbar. Bolts should be fastened with either Nyloc nuts or plain nuts with spring washers.
2. Bolts should be of an appropriate length to ensure 100% thread engagement of the nut. At least one full thread must protrude past the nut. Please consult your bolt supplier to determine the recommended tightening torque of bolts.
3. Ensure that the coupling is only used with a 50mm towball. No other size ball is suitable for use with the ALKO Off Road Coupling.
4. Follow the instructions as shown in Page 2 & 3 to attach towball to coupling.
5. Check that there is enough clearance on the tow hitch – refer to diagram below. Some towbar designs are not compatible with the off road coupling.



6. Grease the shaft by pumping multipurpose grease into the grease nipples at the front and rear of the body until a small amount of grease appears from each end of the shaft - see diagram on page 7 for locations.
7. Load levelling devices can be used with the AL-KO off Road Coupling for on road use without a high degree of angle only.

Load levelling devices are to be removed when a high degree or angle or rotation is to be induced to the combination on or off road. The off-road coupling is designed for applications which require a large amount of articulation and may interfere with load levelling devices. Consult your Load levelling instructions for more information.

Adjusting the Ball Adjustment Screw on the AL-KO Off-Road Coupling

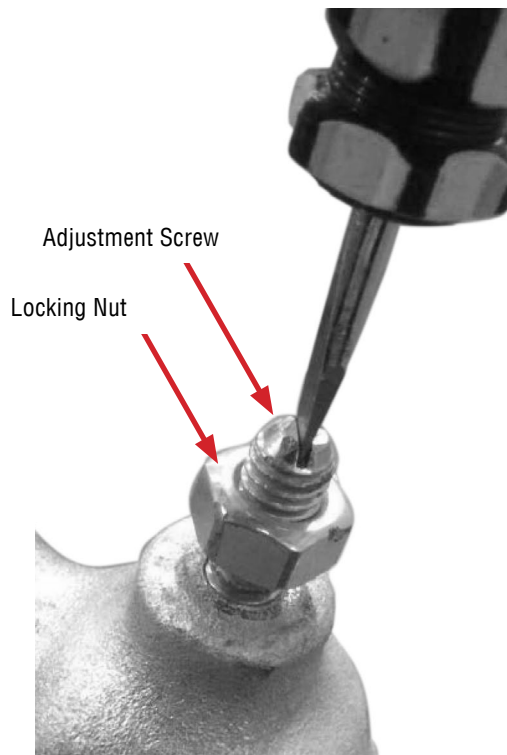
In order to adjust the ball adjustment screw, the coupling must be first fitted to the tow ball.

The 21mm locking nut should first be loosened by turning anticlockwise.

Using a large 'flat head' screwdriver, the adjustment screw should then be turned clockwise until contact is made with the ball. Only very light contact should be made otherwise premature wear may occur.

Tighten the locking nut to ensure the adjustment of the screw does not change.

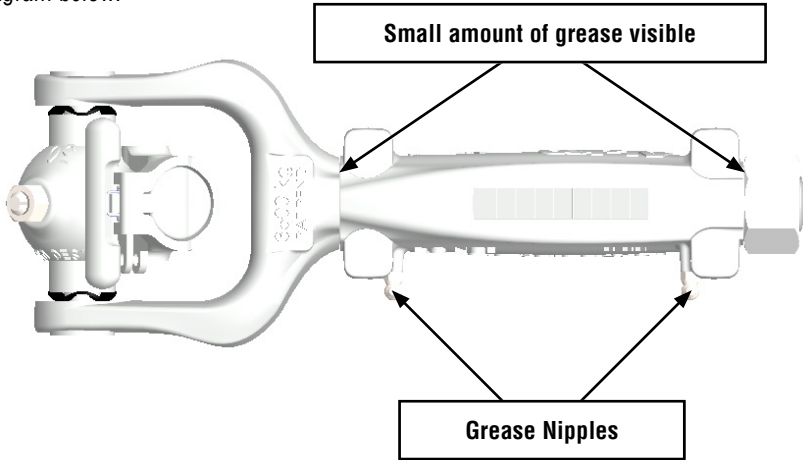
Note: The adjuster screw on an AL-KO tow ball coupling is designed to minimise the design clearance of the tow ball within the coupling socket. The adjuster is not designed to compensate for a tow ball that is under size. Careful attention should be paid to the ball size in the case of excessive wear.



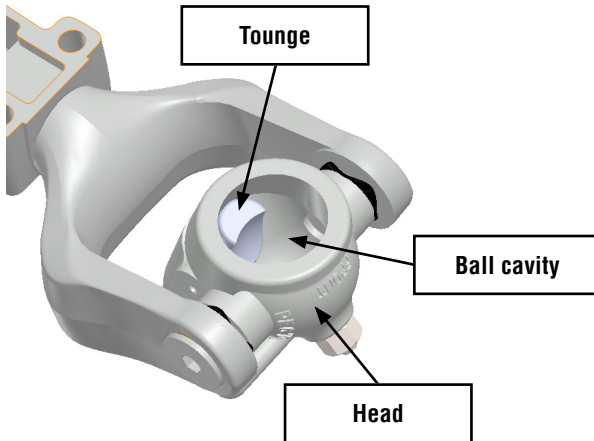
Maintenance

619350 (Fixed) & 619200 (Override)

Grease the shaft by pumping multipurpose grease into the grease nipples at the front and rear of the body until a small amount of grease appears from each end of the shaft - see diagram below.



Check wear of ball cavity and tongue. If excessive wear is present, the head and tongue will need replacing.



Check that no parts are damaged and replace any parts as required.

PLEASE READ THE FOLLOWING CAREFULLY

THE MANUFACTURER AND/OR DISTRIBUTOR HAS PROVIDED THE PARTS LIST AND ASSEMBLY DIAGRAM IN THIS MANUAL AS A REFERENCE TOOL ONLY. NEITHER THE MANUFACTURER OR DISTRIBUTOR MAKES ANY REPRESENTATION OR WARRANTY OF ANY KIND TO THE BUYER THAT HE OR SHE IS QUALIFIED TO MAKE ANY REPAIRS TO THE PRODUCT, OR THAT HE OR SHE IS QUALIFIED TO REPLACE ANY PARTS OF THE PRODUCT. IN FACT, THE MANUFACTURER AND/OR DISTRIBUTOR EXPRESSLY STATES THAT ALL REPAIRS AND PARTS REPLACEMENTS SHOULD BE UNDERTAKEN BY APPROPRIATE TECHNICIANS AND NOT BY THE BUYER. THE BUYER ASSUMES ALL RISK AND LIABILITY ARISING OUT OF HIS OR HER REPAIRS TO THE ORIGINAL PRODUCT OR REPLACEMENT PARTS THERETO, OR ARISING OUT OF HIS OR HER INSTALLATION OF REPLACEMENT PARTS THERETO.

Warranty

AL-KO INTERNATIONAL PTY LTD

Our goods come with guarantees that cannot be excluded under the Australian Consumer Law. You are entitled to a replacement or refund for a major failure and for compensation for any other reasonably foreseeable loss or damage. You are also entitled to have the goods repaired or replaced if the goods fail to be of acceptable quality and the failure does not amount to a major failure.

AL-KO International Pty Ltd (ABN 96 003 066 813)

(“AL-KO”) provides the following warranty in relation to its Tow Coupling (“Product”).

The benefits of this warranty are in addition to any rights and remedies imposed by Australian State and Federal legislation that cannot be excluded. Nothing in this warranty is to be interpreted as excluding, restricting or modifying any State or Federal legislation applicable to the supply of goods and services which cannot be excluded, restricted or modified.

WARRANTY

AL-KO warrants that, subject to the exclusions and limitations below, the Product will be free from defects in materials and workmanship for a period of 36 months from date of purchase. This warranty is not transferable to a subsequent person if the Product is sold by the original purchaser during the warranty period.

If a defect appears in the Product before the end of the warranty period and AL-KO finds the Product to be defective in materials or workmanship, AL-KO will, in its sole discretion, either:

(a) replace or repair the Product or the defective part of the Product free of charge;

or

(b) cause the Product or the defective part of the Product to be replaced or repaired by a qualified repairer free of charge.

AL-KO reserves the right to replace defective parts of the Product with parts and components of similar quality, grade and composition where an identical part or component is not available.

Goods presented for repair may be replaced by refurbished goods of the same type rather than being repaired. Refurbished parts may be used to repair the goods.

WARRANTY CLAIMS

1. If a fault covered by warranty occurs, the customer must within 7 days contact the dealer from which the Product was purchased, or AL-KO at the contact address listed below.

2. Any warranty claim must be accompanied by:

- (a) proof of purchase;
- (b) full details of the alleged defect; and
- (c) any relevant documentation (such as maintenance records).

3. The customer must make the Product available to AL-KO or its authorised repair agent for inspection and testing within 14 days of contacting AL-KO or the dealer in accordance with this warranty claims procedure. If inspection and testing finds no defect in the Product, the customer must pay AL-KO's costs of service work and testing.

4. The cost of transportation to or from AL-KO or the authorised repair agent is to be paid by the customer.

EXCLUSIONS

The warranty will not apply where:

- (a) the Product has been repaired, altered or modified by someone other than AL-KO or an authorised repair agent;
- (b) the Product was improperly installed;
- (c) AL-KO cannot establish any fault in the Product after testing and inspection;
- (d) the Product has been used other than for the purpose for which it was designed;
- (e) the defect in the Product has arisen due to the customer's failure to properly use and maintain the Product in accordance with AL-KO's instructions, recommendations and specifications (including maintenance);
- (f) the Product has been subject to abnormal conditions, including environment, temperature, water, fire, humidity, pressure, stress or similar;
- (g) the defect has arisen due to abuse, misuse, neglect or accident;
- (h) the defect has arisen due to a power surge or of the fault in the supply of electricity; or
- (i) unauthorised parts or accessories have been used on or in relation to the Product.
- (j) the defect is a deterioration of the appearance of the Product
- (k) the defect is a result of wear & tear.

LIMITATIONS

AL-KO makes no express warranties or representations other than set out in this warranty.

The repair or replacement of the Product or part of the Product is the absolute limit of AL-KO's liability under this express warranty.

CONTACT

AL-KO International Pty Ltd
67 Nathan Road, Dandenong South, Victoria, 3175
Phone: (03) 9997 4500

AL-KO

QUALITY FOR LIFE



Visit
www.alko.com.au
for more information