

DX & DB

BRAKING PERFORMANCE

The Dexter Hydraulic Disc Braking Solution

Featuring premium ventilated disc rotor.

Large caravans & trailers need safe, reliable & powerful braking performance, especially in the extreme and demanding conditions found around Australia. Meeting this requirement is an integrated disc braking solution combining the power of the Dexter DX Series, Electric over Hydraulic actuator with the performance of the DB35 hydraulic caliper with ventilated disc rotor.

For further enhanced safety, the system is approved for use with AL-KO Electronic Stability Control (ESC).

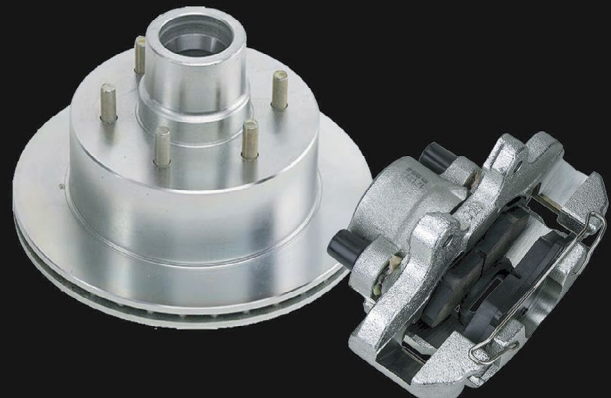
DX Series Actuator

Unlike surge actuators, the pressure output to the brakes corresponds directly with voltage output from the brake controller to deliver powerful, smooth, proportional braking.



DB35 Hydraulic Caliper with Ventiladed Disc Rotor

Developed to create a unique caliper for high capacity application with protection against extreme environmental conditions at the top of list. The result is a caliper that delivers high amounts of braking pressure when used with the Dexter DX Series EH1600 actuator.



DX Series EH1600 & EH1000 Actuators

FEATURES

- ALL STAINLESS STEEL FASTENERS.
- SEALED UNIT TO PROTECT CIRCUIT BOARD.
- FINNED HOUSING FOR EFFICIENT HEAT DISSIPATION.
- WIRING PROTECTION TO PREVENT DAMAGE TO THE UNIT IF WIRED IMPROPERLY.
- SOLID STATE ELECTRONICS FOR IMPROVED PERFORMANCE AND COMPATIBILITY WITH MOST AFTER MARKET INTEGRATED ELECTRIC BRAKE CONTROLLERS.
- LARGE BRAKE FLUID RESERVOIR.
- SELF-PRIMING PUMP.

Part Number	Description
357100	DX EH1000 ELECTRIC/HYDRAULIC ACTUATOR 1000PSI, WITHOUT BATTERY BOX
357105	DX EH1000 ELECTRIC/HYDRAULIC ACTUATOR 1000PSI, WITH BOX & BREAKAWAY.
357160	DX EH1600 ELECTRIC/HYDRAULIC ACTUATOR 1600PSI, WITHOUT BATTERY BOX
357165	DX EH1600 ELECTRIC/HYDRAULIC ACTUATOR 1600PSI, WITH BOX & BREAKAWAY.

DB35 Hydraulic Caliper with Ventilated Disc Rotor

- UNIQUE CONFINED MECHANICAL PARK FEATURE.
- HEAVY DUTY VENTILATED ROTORS FOR RAPID HEAT DISSIPATION.
- FLOATING BODY FOR EVEN PAD APPLICATION AND WEAR.
- MATCHED MATERIALS FOR BODY & PISTON, EQUAL THERMAL EXPANSION PREVENTS LOCK UP.

Part Number	Description
X089-008-01	DB35 HYDRAULIC CALIPER WITHOUT PARK, ZINC LH
X089-008-02	DB35 HYDRAULIC CALIPER WITHOUT PARK, ZINC RH
X089-049-01	DB35 HYDRAULIC CALIPER WITH PARK PROVISION, ZINC LH
X089-049-02	DB35 HYDRAULIC CALIPER WITH PARK PROVISION, ZINC RH
X008-435-05	10 X 3/4" VENTILATED HUB ROTOR ZINC FORD STUD PATTERN
X008-440-05	11.75 X 3/4" VENTILATED HUB ROTOR ZINC 6 L/CR STUD PATTERN

DX Series EH1600 Hydraulic/Electric Actuator in combination with the DB35 Caliper meets braking performance requirements for 2500kg single axle capacity on 16" wheels and tyre.

Please note: Tyre size may effect braking performance