

# BRAKES

## Hydraulic Disc Brakes

Hydraulic disc brake calipers are available in either stainless steel for maximum salt water corrosion resistance or Dacromet™ coated cast iron. Both styles are fitted with special pistons that will not rust.

The simplicity of hydraulic lines connecting multiple calipers makes this style of caliper suitable for installations where more than one axle is used. Trailers with loaded weights exceeding 2000 kg require independent control and breakaway facility, causing the brakes to automatically be activated should the towing vehicle and the trailer become accidentally disconnected. Hydraulic disc brakes used with a simple system such as the IQ7 fulfil this legal requirement. Hydraulic calipers can also be operated using hydraulic over ride couplings for trailers under 2000 kg GTM.

Hydraulic calipers are suitable for disc hubs and rotors of thicknesses of 15mm. Left hand & Right hand calipers are achieved by swaping the bleed screw and fluid line in positions, the bleed screw should always be on the highest port of the caliper.

### DACROMET™

341001 (Pair)



341000 (Left hand)      341000 (Right hand)

**Type:** DACROMET™

**Recommended maximum load on 13"/14" wheels**

1600 kg per pair

**Recommended maximum load on 15"/16" wheels**

1400 kg per pair

**Mounting Detail**

12mm H.T. X 45mm set screws. 88.9mm (3.5")

### Stainless Steel

341051 (Pair)



341050 (Left hand)      341050 (Right hand)

**Type:** Stainless steel

**Recommended maximum load on 13"/14" wheels**

1600 kg per pair

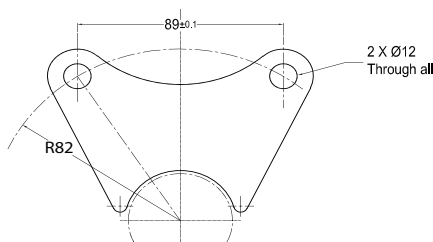
**Recommended maximum load on 15"/16" wheels**

1400 kg per pair

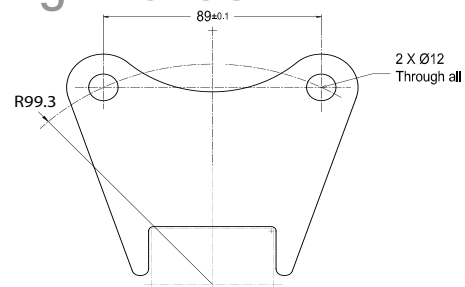
**Mounting Detail**

12mm H.T. X 45mm set screws. 88.9mm (3.5")

## Hydraulic Disc Brake Mounting Plates



Mount Plate to suit AL-KO hydraulic calipers (13"/14")



Mount Plate to suit AL-KO hydraulic calipers (16")

Part No.	Description	To Fit Axle Size	Suits Disc Type
342115	Hydraulic caliper mount plate	39mm round	Disc hub (13"/14")
342143	Hydraulic caliper mount plate	40mm square	Disc hub (13"/14")
342147	Hydraulic caliper mount plate	45mm square	Disc hub (13"/14")
342110	Hydraulic caliper mount plate	45mm round	Disc hub (13"/14")
342160	Hydraulic caliper mount plate	50mm square	Hub + Disc (16") 2T & 3T
342165	Hydraulic caliper mount plate	45mm square	Hub + Disc (16") 2T & 3T
342175	Hydraulic caliper mount plate	56mm round	Hub + Disc (16") 2T & 3T