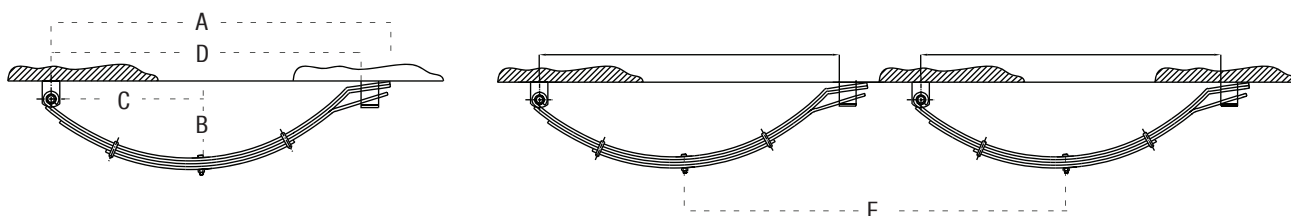


# EYE & SLIPPER SPRINGS

## 45mm LEAF

This term describes a leaf spring style where one end of the spring has the “traditional” eye and the other end comprises the open leaf or leaves of the spring forming a “tail” which slides in a “keeper” or “hanger” which is welded to the chassis of the trailer. This style of spring is very simple and long wearing, and is available in both black paint and Dacromet Coated finish. Slipper springs can be joined on a multi axle trailer with the tail of the front spring sliding over the eye of the rear spring. Alternatively these springs can be attached to the trailer as individual sets. This style of spring arrangement is a simple and low cost solution to multi-axle trailer suspension.



## Slipper Springs 45mm x 6mm, 1/2” I.D. Eye, Black

Part No.	Description	Spring Bush Dimensions	A	B	C	D	E	Capacity for two springs
584563	3 leaf Eye slipper spring	1/2” X 7/8” X 45mm	765mm	155mm	330mm	700mm	725mm	600 kg
584564	4 leaf Eye slipper spring	1/2” X 7/8” X 45mm	765mm	155mm	330mm	700mm	725mm	900 kg
584565	5 leaf Eye slipper spring	1/2” X 7/8” X 45mm	765mm	155mm	330mm	700mm	725mm	1000 kg
584566	6 leaf Eye slipper spring	1/2” X 7/8” X 45mm	765mm	155mm	330mm	700mm	725mm	1200 kg
584567	7 leaf Eye slipper spring	1/2” X 7/8” X 45mm	765mm	155mm	330mm	700mm	725mm	1350 kg
584569	9 leaf Eye slipper spring	1/2” X 7/8” X 45mm	765mm	155mm	330mm	700mm	725mm	1600 kg

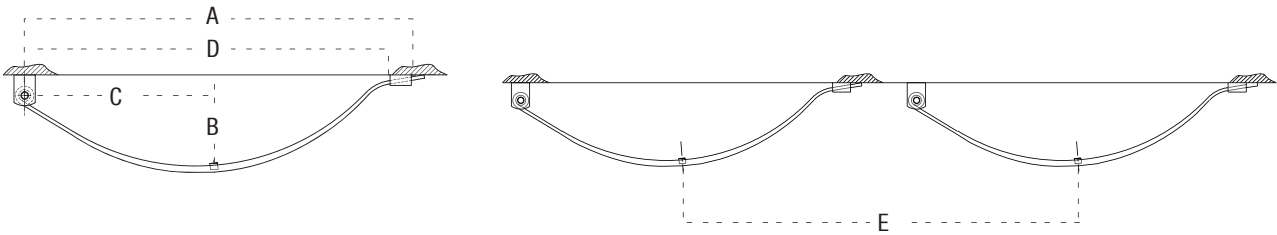
## Slipper Springs 45mm x 6mm, 1/2” I.D. Eye, DACROMET™

Part No.	Description	Spring Bush Dimensions	A	B	C	D	E	Capacity for two springs
584563DT	3 leaf Eye slipper spring	1/2” X 7/8” X 45mm	765mm	155mm	330mm	700mm	725mm	600 kg
584564DT	4 leaf Eye slipper spring	1/2” X 7/8” X 45mm	765mm	155mm	330mm	700mm	725mm	900 kg
584565DT	5 leaf Eye slipper spring	1/2” X 7/8” X 45mm	765mm	155mm	330mm	700mm	725mm	1000 kg
584566DT	6 leaf Eye slipper spring	1/2” X 7/8” X 45mm	765mm	155mm	330mm	700mm	725mm	1200 kg
584567DT	7 leaf Eye slipper spring	1/2” X 7/8” X 45mm	765mm	155mm	330mm	700mm	725mm	1350 kg
584569DT	9 leaf Eye slipper spring	1/2” X 7/8” X 45mm	765mm	155mm	330mm	700mm	725mm	1600 kg

# EYE & SLIPPER SPRINGS

## 45mm Parabolic

Using automotive design technology, the parabolic spring is a slipper type which has only one leaf. This single leaf tapers at the ends and is thicker in the middle of the spring. The performance of these springs is similar to that of multi leaf slipper springs, but without multiple leaves lends itself to Dacromet™ coating for the marine trailer industry due to its ability to resist the rusting that naturally occurs in a salt water environment.

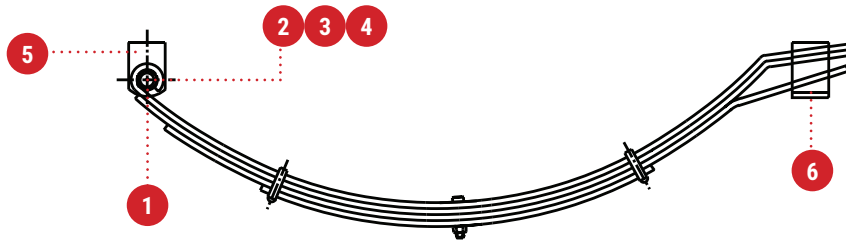


## Parabolic Springs 45mm, 1/2" I.D. Eye, DACROMET™

Part No.	Description	Spring Bush Dimensions	A	B	C	D	E	Capacity for two springs
584523D	3 leaf Eye slipper spring	1/2" X 7/8" X 45mm	755mm	150mm	350mm	690mm	860mm	600 kg
584525D	4 leaf Eye slipper spring	1/2" X 7/8" X 45mm	755mm	150mm	350mm	690mm	860mm	1000 kg
584527D	5 leaf Eye slipper spring	1/2" X 7/8" X 45mm	755mm	150mm	350mm	690mm	860mm	1400 kg

# EYE & SLIPPER SPRINGS SUPPORT

Eye Slipper Spring 45mm Service & Kit parts



1



590001  
Spring nylon bush 1/2"  
ID 1/2" OD 7/8" L 45mm

2



590113  
Shackle Bolt Non-Greasable 1/2"

3



590119  
Shackle Bolt Nyloc Nut 1/2" BSW

4



590442  
Rear Slipper Hanger 45mm spring

5



590443  
Deep Front Slipper Hanger 45mm  
spring 1/2" bolt

6

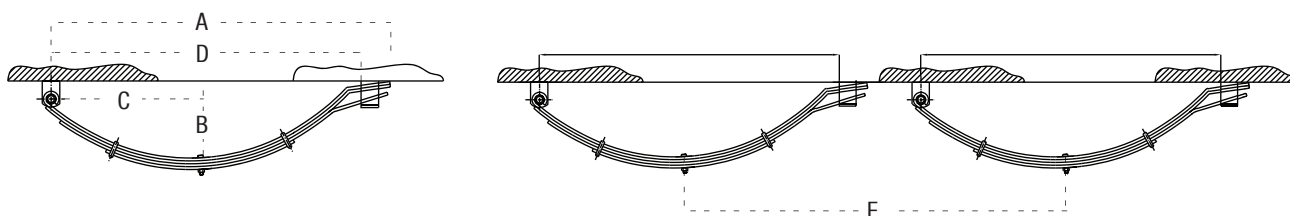


590445  
Rear Slipper Hanger 45mm  
spring

# EYE & SLIPPER SPRINGS

## 60mm Leaf

This term describes a leaf spring style where one end of the spring has the “traditional” eye and the other end comprises the open leaf or leaves of the spring forming a “tail” which slides in a “keeper” or “hanger” which is welded to the chassis of the trailer. This style of spring is very simple and long wearing. Slipper springs can be joined on a multi axle trailer with the tail of the front spring sliding over the eye of the rear spring. Alternatively these springs can be attached to the trailer as individual sets. This style of spring arrangement is a simple and low cost solution to multi-axle trailer suspension.

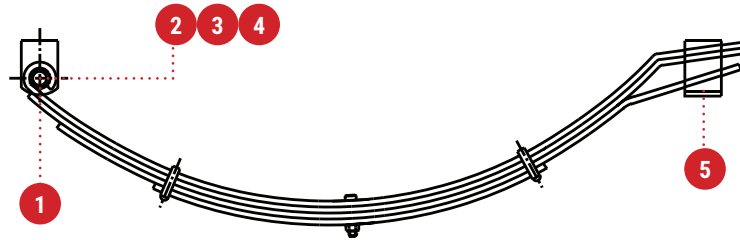


## Slipper Springs 60mm x 6mm, 5/8" I.D. Eye, Black

Part No.	Description	Spring Bush Dimensions	A	B	C	D	E	Capacity for two springs
586006	6 leaf Eye slipper spring	5/8" X 7/8" X 60mm	765mm	150mm	330mm	700mm	860mm	1300 kg
586007	7 leaf Eye slipper spring	5/8" X 7/8" X 60mm	765mm	150mm	330mm	700mm	860mm	1400 kg
586009	9 leaf Eye slipper spring	5/8" X 7/8" X 60mm	765mm	150mm	330mm	700mm	860mm	1700 kg
586011	10 leaf Eye slipper spring	5/8" X 7/8" X 60mm	765mm	150mm	330mm	700mm	860mm	2000 kg

# EYE & SLIPPER SPRINGS SUPPORT

Eye Slipper Spring 60mm Service & Kit parts



1



**590003**  
Spring nylon bush  
ID 5/8" OD 7/8" L 60mm

2



**590125**  
Shackle pin non-greasable  
D 5/8" L 4"

3



**590614**  
Shackle pin nyloc nut 5/8" UNF

4



**590451**  
Spring hanger front assy 60mm  
slipper & plate 50x100x5mm

5



**590450**  
Rear Slipper Hanger on strap  
60mm spring  
W 60mm