

MECHANICAL DRUM BRAKE SERVICE PARTS



1
320110
9" Mechanical lever adjuster



2
320140
9" Mechanical lever top spring



3
320141
9" Mechanical lever bottom spring



4
320150
9" Mechanical lever brake shoe (one shoe)



5
390021
Nut hex 7/16 UNF zinc plated

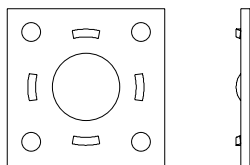


6
390020
Bolt 7/16" x 1" UNF HT



7
190054
Washer 7/16" external shake proof

MECHANICAL DRUM BRAKE BRAKE MOUNTING PLATES



Pressed Mount Plate to suit 9" Mechanical brakes, also suit electric 10"

Part No.	Description	To Fit Axle Size	Number of Holes & PCD
332100	9" Mechanical Lever Mounting Plate (39mm bore)	39mm Round	4 Holes on 76.15mm PCD
332140	9" Mechanical Lever Mounting Plate	40mm square	4 Holes on 76.15mm PCD
332150	9" Mechanical Lever Mounting Plate (45mm bore s/line)	45mm Round	4 Holes on 76.15mm PCD
332160	9" Mechanical Lever Mounting Plate (45mm square)	45mm Square	4 Holes on 76.15mm PCD
312100	9" Mechanical Centre Pull Mounting Plate	39mm Round	4 Holes on 76.15mm PCD
312150	9" Mechanical Centre Pull Mounting Plate	45mm Round	4 Holes on 76.15mm PCD