

BRAKES

Hydraulic Drum Brakes

Hydraulic drum brakes are similar to those used in the automotive industry for many years and are reliable and efficient. The simplicity of hydraulic lines for installation and maintenance and a perfect partner for on road over run brake system on trailers less than 2000 kg gross laden weight.

9" No Park

311102 (Pair)



311101 (Left hand)

311100 (Right hand)

Park Brake: No

Recommended maximum load on 13"/14" wheels

1450 kg per pair

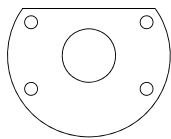
Recommended maximum load on 15"/16" wheels

1200 kg per pair

Mounting Detail

4 x 3/8" UNF x 101.6mm PCD Not equally spaced

Hydraulic Drum Brake Mounting Plates



Pressed Mount Plate to suit 9" Hydraulic brakes

Part No.	Description	To Fit Axle Size	Number of Holes & PCD
312200	9" Hydraulic mounting plate	39mm Round	4 Holes on 101.6mm PCD Not equally spaced
312250	9" Hydraulic mounting plate	45mm Round	4 Holes on 101.6mm PCD Not equally spaced