

## WORK INSTRUCTION

### Replacing the Webbing on an AL-KO Winch



The first step is to fully unwind the winch webbing to expose the drum core and roll pin that holds the shaft in place.

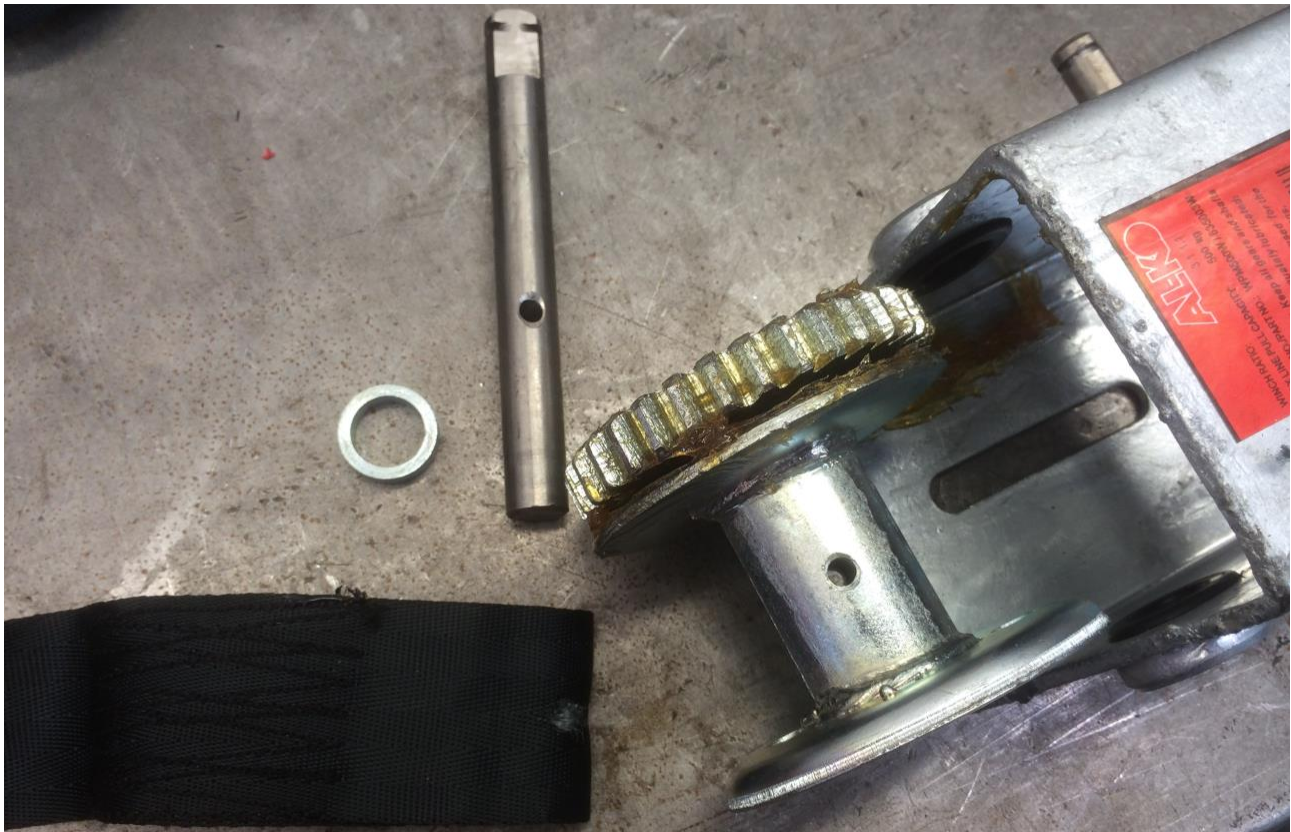
Using an appropriately sized pin punch and a hammer, knock the roll pin all the way through and out of the drum core and shaft.

It is now possible to slide the shaft out by hand in order to release the webbing and the drum assembly.



## WORK INSTRUCTION

### Replacing the Webbing on an AL-KO Winch



The parts after disassembly are shown above. The installation of the new webbing is simply the reverse of the disassembly, with the following points.

Ensure the bushing is put back in its original location (opposite end to the gear)

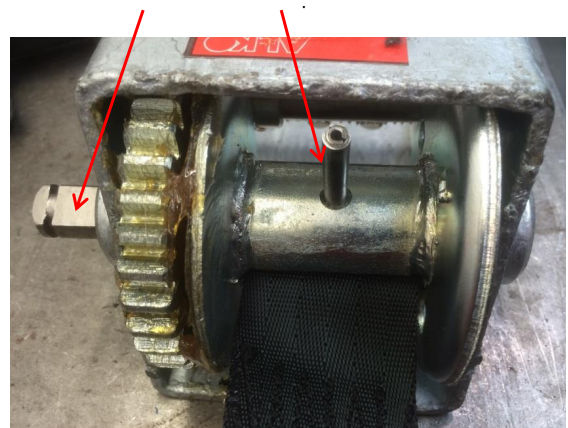
Ensure the webbing loop has been positioned nicely within the drum to allow the shaft to slide easily back into place.

Gently but firmly hammer the roll pin all the way through. The roll pin will punch through the webbing, shaft and the other side of the drum core.

A pin punch will be needed to ensure it is hammered below the surface of the drum on both sides.

**Note:** If the roll pin is protruding at all, it will lead to premature wearing of the webbing in this location.

The flat portion of the shaft is in line with the hole for the roll pin.



**For more information contact:**

**AL-KO International Pty Ltd**

67 -91 Nathan Road, Dandenong South, VIC 3175 Australia Phone: (61) 3 9767 3700 Fax: (61) 3 9767 3799

Email: [info@alko.com.au](mailto:info@alko.com.au) Web: [www.alko.com.au](http://www.alko.com.au)