

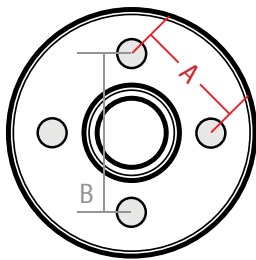
AL-KO STUD PATTERN CHART

Throughout this guide the terms Stud Pattern and Pitch Circle Diameter are in conjunction referenced with a product. Pitch circle diameter(PCD) is a reference to the number of studs equally space around a circle diameter centralised on a hub face. Stud pattern is a popular term for a combination of a PCD and stud size.

The chart below is a reference to the standard product produced by AL-KO for stud patterns.

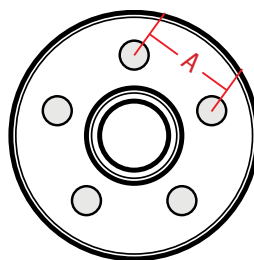
Stud Pattern	PCD	Wheel Stud Thread	Common Thread Options
Ford	5 x 4.5"	1/2" UNF	
Commodore	5 x 120mm	7/16" UNF	12mm
HT	5 x 4.25"	7/16" UNF	
HQ	5 x 4.75"	7/16" UNF	
Gemini	4 x 100mm	7/16" UNF	
Honda	4 x 100mm	7/16" UNF	
Datsun	4 x 4.5"	7/16" UNF	
Mini 7/16	4 x 4"	7/16" UNF	
5 stud LCR	5 x 150mm	9/16" UNF	14mm
6 stud LCR	6 x 139.7mm	1/2" UNF	12mm
Nissan	6 x 139.7mm	1/2" UNF	12mm
Range Rover	5 x 6.5"	5/8" UNF	
Ford F100	5 x 139.7mm	1/2" UNF	12mm
Bedford	6 x 205mm	7/8" UNF	
Land Rover Defender	5 x 6.5"	5/8" UNF	9/16" UNF
Subaru	5 x 100mm	7/16" UNF	
New Navara, Nissan	6 x 114.3	1/2" UNF	

How to measure a PCD



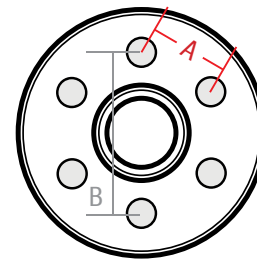
4 Stud

Measure from one stud centre to its nearest neighbour centre illustrated as "A". Divide "A" by 0.7071 = PCD or measure one stud centre to its furthest neighbour centre illustrated as "B", "B" = PCD



5 Stud

Measure from one stud centre to its neighbours centre illustrated as "A". Divide "A" by 0.5878 = PCD



6 Stud

Measure from one stud centre to its neighbours centre illustrated as "A". Divide "A" by 0.5 = PCD or measure one stud centre to its furthest neighbour centre illustrated as "B", "B" = PCD

Helpful Hint:

AL-KO can produce further combinations than those listed above. Contact your service agent to discuss your needs.

CAUTION

Some wheel fitments can require a reduction on the hub outer boss which can reduce the hub rating.