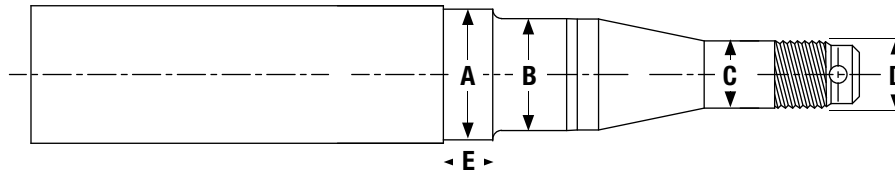


AXLE / STUB AXLE MACHINING PROFILE SELECTION



Bearing Type	Manufacturer's Bearing Number (Inner)	(B) "Nominal" Inner Bearing Diameter (mm)	Manufacturer's Bearing Number (Outer)	(C) "Nominal" Outer Bearing Diameter (mm)	(D) Thread Size & Type (inches)	(A) "Nominal" Seal Journal Diameter (mm)	(E) "Nominal" Seal Journal Length (mm)	AL-KO Seal Part Number
LM	LM 67048/10	31.75	LM 11949/10	19.05	¾" UNF - 16 TPI	37.5	14mm	491015
LM Marine	LM 67048/10	31.75	LM 11949/10	19.05	¾" UNF - 16 TPI	37.5	14mm	491017
SL	LM 68149/10	35.00	LM 12749/10	22.00	¾" UNF - 16 TPI	43.9	27mm	492015
SL Marine	LM 68149/10	36.00	LM 12749/10	23.00	¾" UNF - 16 TPI	44.9	14mm	491018
Parallel	LM 68149/10	35.00	LM 68149/10	35.00	1" UNS - 14 TPI	43.9	27mm	492015
1.5 T	LM 29749/10	38.10	LM 67048/10	31.75	1" UNS - 14 TPI	50.9	12mm	493015
2 T	HR 30210	50.00	15123 / 15245	31.75	1" UNS - 14 TPI	60.3	18mm	494015
2 T Marine	HR 30210	50.00	15123 / 15245	31.75	1" UNS - 14 TPI	60.3	15mm	494013
3 T	HR 30210	50.00	LM 29749/10	38.10	1¼" UNF	60.3	72mm	494015
3 T Marine	HR 30210	50.00	LM 29749/10	38.10	1¼" UNF	60.3	16mm	494013